

Building On Faith

St. Denis Catholic Community has been a vibrant and inspirational center of worship, learning and service in the community of Diamond Bar since 1971. We strive to offer the best possible liturgical, spiritual, educational and community environment for more than 6,000 households and the broader community.

Our only limitation in meeting our goals is the space we have available now. We have reached the point where a new Parish Center and Hall is the most critical and appropriate solution for us to meet the spiritual, physical and social needs of our diverse and growing parish family.

Today we take another step in *Building on Faith* - our historic \$5.5 million Capital Campaign that will fund the design, construction and furnishing of a new Parish Center and Hall.



Conceptual Drawing of new Parish Center

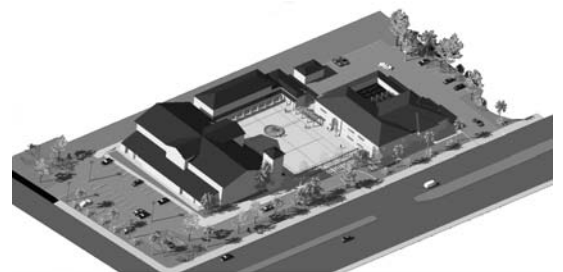
The *Building on Faith* Campaign is our response to these needs. It will allow us to fulfill our mission statement and leave a lasting legacy for generations of St. Denis parishioners.

This new facility will serve as the vibrant center of our parish life. With approximately 20,000 square feet of space, it will meet our current needs while also providing the space necessary to increase our programs as new needs arise.

The active fund raising for our campaign begins today and will continue over the next few months. Several parishioners have already become involved in key campaign leadership positions. Gilbert and Mary Rivera, Jody and Helene Galang, Art and Carol Herrera, Paul Branks, Bob and Irene Evans, Jovi and Carolina Cacio, Bert Castro, and Priscilla Macaraig have been working hard for many months to prepare for the Campaign. **Through the efforts of these fine leaders St. Denis has raised over \$2.1 Million, which represents nearly 40% of our goal!**

In the coming days and weeks you will learn more about this historic Campaign and how it will meet our parish needs. For now, you are being asked to do three very important things:

1. **Become involved as a volunteer** when asked. We need to get many parishioners involved for this Campaign to be successful – many hands make light work! Please join your fellow parishioners in helping make this campaign a great success.
2. **Listen to our volunteers** when they speak with you about the Campaign and ask for your support.
3. **Please consider making a sacrificial pledge** to this important Campaign. Those asking you have already made their personal commitments. Won't you join them?



Completing the Master Plan – Conceptual Drawing